



Jintai Ball Transfer System 锦泰万向球产品（系列）

Pressed Steel Series 冲压轻型万向球



Machined Steel Series 精制重型万向球



Plastic Material Series 塑料材质万向球



锦泰万向球
Jintai Ball Transfer System

万向球使用注意要点 Some suggestions when using

万向球的使用建议

- 1.使用前建议加上润滑油
- 2.计算单个万向球最大负载重量时，建议采用朝上的万向球规格里的“建议负载能力”，钢珠朝上型的万向球朝下使用最大负载量*0.5，以防物料表面不平整导致单个万向球偶尔负载过高。
- 3.和万向球接触的物料平面尽量平整，建议使用铁制托盘
- 4.建议最少放置3列（行）万向球与物料接触
- 5.排列方法一般为水平跟菱形，菱形排列需比水平排列多放置一列（行）万向球
- 6.在物料平面凹凸不平时可以使用带弹簧的万向球
- 7.带弹簧的万向球需要考虑负载问题，务必增加承载的万向球数量
- 8.建议平常使用，线速度不超过2米/秒
- 9.当线速度为1米/秒时，动摩擦系数约为0.05-0.005 μ ，依照万向球的材质不同摩擦系数会有变化
- 10.全钢制万向球最高耐温1000摄氏度，塑料材质的最高60摄氏度

Some suggestions when using

1. It is recommended to add lubricant before use.
2. When calculating the maximum load weight of a single unit, it is recommended to use the "Suggested" load capacity. When the ball-to-up type unit is used downwards, it is recommended with 50% loading capacity data.
3. The material surface is better as flat as possible. It is recommended to use iron tray.
4. It is recommended to place at least 3 columns (rows) of units in contact with the material surface.
5. The arrangement method is generally horizontal and rhombic, and the rhombic arrangement needs to place one column (row) of units more than the horizontal arrangement.
6. You can use spring-loaded ball transfer units when the material surface is uneven
7. The unit with spring needs to consider the load problem, and it is necessary to increase the number of units.
8. It is recommended to use it normally linear speed not exceed 2m/s
9. When the linear speed is 1m/s, the dynamic friction coefficient is about 0.05-0.005 μ , and the friction coefficient will vary according to the material of ball transfer unit.
10. Full steel or stainless steel material ball transfer units can used in maximum temperature of 1000 degrees Celsius, full plastic material type recommended not over 60 degrees Celsius



Jintai
Ball Transfer System
锦泰万向球产品 (系列)

主球/壳体使用的材制代码 (Material Code for Main-Ball/Shell)

| | |
|------------|--|
| CS/CS | 主球材质碳钢, 壳体材质碳钢 Main ball in Carbon Steel, Shell in Carbon Steel |
| BS/CS | 主球材质轴承钢, 壳体材质碳钢 Main ball in Bearing Steel, Shell in Carbon Steel |
| PL/CS | 主球材质塑料, 壳体材质碳钢 Main ball in Plastic, Shell in Carbon Steel |
| SS/CS | 主球材质 304 不锈钢, 壳体材质碳钢 Main ball in 304 Stainless steel, Shell in Carbon Steel |
| SS/SS | 主球材质 304 不锈钢, 壳体材质 304 不锈钢 Main ball in 304 Stainless Steel, Shell in 304 Stainless Steel |
| PL/PL | 主球材质塑料, 壳体材质塑料 Main ball in Plastic, Shell in Plastic |
| SS/PL | 主球材质 304 不锈钢, 壳体材质塑料 Main ball in 304 Stainless Steel, Shell in Plastic |
| S4/SS | 主球材质 440 不锈钢, 壳体材质 304 不锈钢 Main ball in 440 Stainless Steel, Shell in 304 Stainless Steel |
| 其他(Others) | S6: 316 不锈钢(316 Stainless Steel); NY: 尼龙(Nylon) |

说明(Remarks):

冲压系列(CY)未指定材制代码时默认为 CS/CS
(Default material is CS/CS for CY series)
其他车制系列未指定材制代码时默认为 BS/CS
(Default material is BS/CS for machined steel series)
仿 MSM 系列未指定材制代码时默认为 SS/SS
(Default material is SS/SS for MSM series)
NL 系列未指定材制代码时默认为 PL/PL
(Default material is PL/PL for NL series)

常见的安装方式(General Installation Ways)

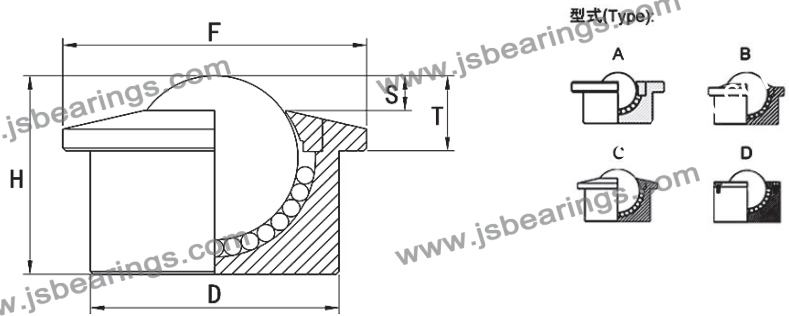
| | |
|-----------------------------|--|
| 自攻螺钉 Self Tapping Screw | 适用于轻载薄法兰上带孔的型号, 如 CY-A, CY-B 等系列 Fit for light duty flanged type, like CY-A, CY-B series |
| 拉铆钉 Rivet | 适用于轻载薄法兰上带孔的型号, 如 CY-A, CY-B 等系列 Fit for light duty flanged type, like CY-A, CY-B series |
| 螺栓 Bolt | 适用于重载法兰上带孔的型号, 如 IA, IS, SD, SI, UK, KSF, NL-A, NL-B 等系列 Fit for heavy duty flanged type, like IA, IS, SD, SI, UK, KSF, NL-A, NL-B series |
| 钻孔压入 Press Drop-in | 适用于无法兰或法兰上无孔的型号, 如 CY-H, SP, KSM 等系列 Fit for none flange type, like CY-H, SP, KSM series |
| DIN471 卡簧 DIN471 Circlip | 适用于小尺寸无法兰型号, 如 CY-H, SP, KSM, NL-C, NL-H 等系列 Fit for none flange type small sizes, like CY-H, SP, KSM, NL-C, NL-H series |
| 螺母 Nut | 适用于带螺杆型, 如 CY-F, SP-FL, KSM-FL, 等系列 Fit for bolt type, like CY-F, SP-FL, KSM-FL series |
| 焊接 Welding | 使用于外壳为碳钢材质的型号, 需考虑是否方便更换 Fit for carbon steel shell types, please consider how to replaced if welded |



Jintai Ball Transfer System 锦泰万向球产品 (系列)

SP 重型万向球系列
Machined Steel SP Series

可选材质(Available Materials):
BS/CS, PL/CS, SS/CS, SS/SS, PL/SS



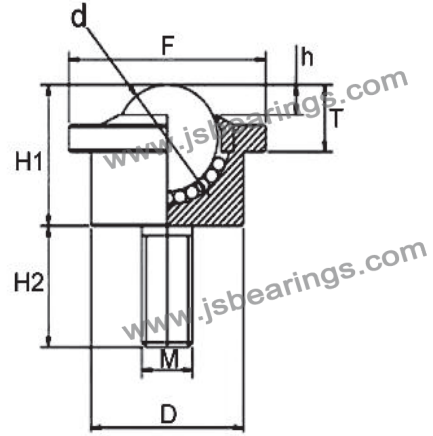
| 型号 Model No. | 负载能力 Loading Capacity (kg) | | | 尺寸(mm) Dimensions | | | | | | 型式 Type | 重量(kg) Weight |
|-----------------|----------------------------|---------------|------------|----------------------|-----|-----|-----|------|------|------------|------------------|
| | 材质 Material | 建议 Suggest | 最大 Max. | d | D | F | S | T | H | | |
| SP-8 | BS/CS | 8 | 15 | 8 | 15 | 20 | 2 | 4.3 | 11.1 | A | 0.015 |
| | SS/SS | 5 | 10 | | | | | | | | |
| SP-12 | BS/CS | 25 | 30 | 12 | 18 | 23 | 2 | 7.3 | 15.5 | B,C | 0.030 |
| | SS/SS | 20 | 25 | | | | | | | | |
| SP-15 | BS/CS | 40 | 50 | 15.875 | 24 | 31 | 4.5 | 10 | 21 | B,C | 0.060 |
| | SS/SS | 30 | 40 | | | | | | | | |
| SP-19 | BS/CS | 80 | 100 | 19 | 30 | 37 | 4.5 | 10 | 26 | B,C | 0.150 |
| | SS/SS | 60 | 80 | | | | | | | | |
| SP-22 | BS/CS | 140 | 160 | 22.225 | 36 | 45 | 4 | 9.8 | 31 | B,C | 0.185 |
| | SS/SS | 100 | 120 | | | | | | | | |
| SP-25 | BS/CS | 180 | 200 | 25.4 | 38 | 45 | 7.2 | 14 | 31 | B,C | 0.190 |
| | SS/SS | 130 | 150 | | | | | | | | |
| SP-30 | BS/CS | 250 | 300 | 30.163 | 45 | 55 | 6.4 | 13.8 | 36.5 | B,C | 0.380 |
| | SS/SS | 190 | 240 | | | | | | | | |
| SP-38 | BS/CS | 380 | 420 | 38.1 | 57 | 69 | 8 | 16.5 | 46.5 | B,C | 0.920 |
| | SS/SS | 280 | 300 | | | | | | | | |
| SP-45 | BS/CS | 450 | 500 | 45 | 62 | 75 | 9 | 19 | 54 | B,C | 1.10 |
| | SS/SS | 320 | 360 | | | | | | | | |
| SP-60 | BS/CS | 800 | 1200 | 60 | 100 | 117 | 20 | 30 | 78 | B,C | 3.80 |
| | SS/SS | 550 | 800 | | | | | | | | |
| SP-76 | BS/CS | 2000 | 2500 | 76 | 130 | 130 | 23 | / | 103 | D | 10.0 |
| SP-90 | BS/CS | 3000 | 3500 | 90 | 145 | 145 | 25 | / | 115 | D | 12.0 |
| SP-100 | BS/CS | 4500 | 5000 | 100 | 190 | 190 | 31 | / | 130 | D | 20.0 |
| SP-150 | BS/CS | 6000 | 6500 | 150 | 240 | 240 | 45 | / | 200 | D | 25.0 |

备注:
SP 系列全塑料材质请参考第页 NP 系列产品
SP series products in plastic material, please refer to NP series at Page



Jintai Ball Transfer System 锦泰万向球产品 (系列)

SP-FL 重型带杆万向球系列 可选材质(Available Materials):
Machined Steel SP-FL Series BS/CS, PL/CS, SS/CS, SS/SS, PL/SS



| 型号 Model No. | 负载能力 Loading Capacity (kg) | | | 尺寸(mm) Dimensions | | | | | | | | 重量(kg) Weight |
|-----------------|----------------------------|---------------|------------|----------------------|-----|-----|-----|------|------|----|-----|------------------|
| | 材质 Material | 建议 Suggest | 最大 Max. | d | D | F | h | T | H1 | H2 | M | |
| SP-8FL | BS/CS | 8 | 15 | 8 | 15 | 20 | 2 | 4.3 | 11.1 | 12 | M5 | 0.020 |
| | SS/SS | 5 | 10 | | | | | | | | | |
| | PL/CS | 3 | 5 | | | | | | | | | |
| SP-15FL | BS/CS | 40 | 50 | 15.875 | 24 | 31 | 4.5 | 10 | 21 | 18 | M8 | 0.085 |
| | SS/SS | 30 | 40 | | | | | | | | | |
| | PL/CS | 15 | 20 | | | | | | | | | |
| SP-22FL | BS/CS | 140 | 160 | 22.225 | 36 | 45 | 4 | 9.8 | 31 | 22 | M10 | 0.250 |
| | SS/SS | 100 | 120 | | | | | | | | | |
| | PL/CS | 20 | 25 | | | | | | | | | |
| SP-25FL | BS/CS | 180 | 200 | 25.4 | 38 | 45 | 7.5 | 13.8 | 31 | 25 | M12 | 0.280 |
| | SS/SS | 130 | 150 | | | | | | | | | |
| | PL/CS | 25 | 30 | | | | | | | | | |
| SP-25FK | BS/CS | 150 | 180 | 25.4 | 44 | 50 | 7.3 | 13.1 | 35 | 20 | M12 | 0.250 |
| | SS/SS | 100 | 130 | | | | | | | | | |
| | PL/CS | 25 | 30 | | | | | | | | | |
| SP-30FL | BS/CS | 250 | 300 | 30.163 | 45 | 55 | 6.4 | 13.8 | 36.5 | 30 | M16 | 0.410 |
| | SS/SS | 190 | 240 | | | | | | | | | |
| | PL/CS | 35 | 40 | | | | | | | | | |
| SP-38FL | BS/CS | 380 | 420 | 38.1 | 57 | 69 | 8 | 16.5 | 46.5 | 40 | M18 | 0.970 |
| | SS/SS | 280 | 300 | | | | | | | | | |
| | PL/CS | 40 | 45 | | | | | | | | | |
| SP-45FL | BS/CS | 450 | 500 | 45 | 62 | 75 | 9 | 19 | 54 | 45 | M20 | 1.150 |
| | SS/SS | 320 | 360 | | | | | | | | | |
| | PL/CS | 45 | 50 | | | | | | | | | |
| SP-60FL | BS/CS | 800 | 1200 | 60 | 100 | 117 | 14 | 30 | 78 | 60 | M24 | 4.000 |
| | SS/SS | 550 | 800 | | | | | | | | | |



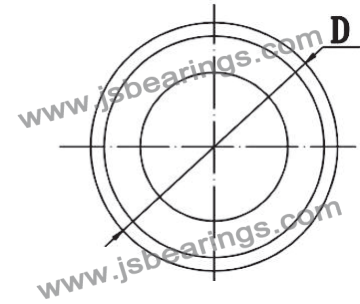
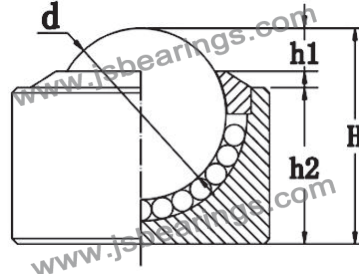
Jintai Ball Transfer System 锦泰万向球产品 (系列)

KSM 重型万向球系列

可选材质(Available Materials):

Machined Steel KSM Series

BS/CS, PL/CS, SS/CS, SS/SS, PL/SS



| 型号 | 编号 | 负载能力 Loading Capacity (kg) | | | 尺寸(mm) | | | | | 重量(kg) |
|-----------|------|----------------------------|---------|------|------------|-----|-----|------|------|--------|
| | | 材质 | 建议 | 最大 | Dimensions | | | | | |
| Model No. | | Material | Suggest | Max. | d | D | h1 | h2 | H | Weight |
| KSM-8 | 1501 | BS/CS | 5 | 8 | 8 | 12 | 1.7 | 8 | 10.3 | 0.006 |
| | | SS/SS | 3 | 5 | | | | | | |
| KSM-10 | 1502 | BS/CS | 15 | 20 | 10 | 16 | 2.5 | 8.5 | 12.5 | 0.028 |
| | | SS/SS | 10 | 15 | | | | | | |
| KSM-12 | 1503 | BS/CS | 25 | 30 | 12 | 18 | 2 | 14 | 15.5 | 0.035 |
| | | SS/SS | 20 | 25 | | | | | | |
| KSM-15 | 1504 | BS/CS | 40 | 45 | 15.875 | 24 | 4 | 20 | 23 | 0.050 |
| | | SS/SS | 30 | 40 | | | | | | |
| KSM-22 | 1505 | BS/CS | 80 | 100 | 22.2 | 36 | 6 | 23 | 31 | 0.190 |
| | | SS/SS | 60 | 80 | | | | | | |
| KSM-25 | 1506 | BS/CS | 120 | 150 | 25.4 | 37 | 6.5 | 24 | 32 | 0.230 |
| | | SS/SS | 95 | 125 | | | | | | |
| KSM-30 | 1507 | BS/CS | 180 | 200 | 30.16 | 45 | 8 | 27 | 38 | 0.340 |
| | | SS/SS | 150 | 170 | | | | | | |
| KSM-38 | 1508 | BS/CS | 250 | 300 | 38.1 | 55 | 9.5 | 33.5 | 48 | 0.560 |
| | | SS/SS | 200 | 250 | | | | | | |
| KSM-45 | 1509 | BS/CS | 400 | 450 | 45 | 62 | 11 | 37.6 | 53.4 | 0.900 |
| | | SS/SS | 300 | 350 | | | | | | |
| KSM-60 | 1510 | BS/CS | 550 | 600 | 60 | 100 | 20 | 47.5 | 77.5 | 2.100 |
| | | SS/SS | 400 | 450 | | | | | | |

其他可以定制材料(Other Materials available):

主球(Main Ball): 塑料 POM、尼龙 Nylon; 壳体(Shell): 塑料 POM、尼龙 Nylon



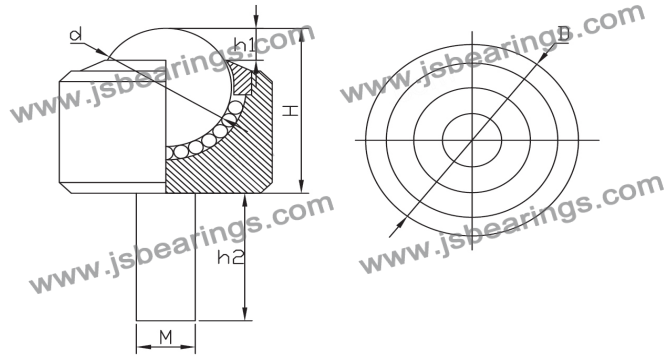
Jintai Ball Transfer System 锦泰万向球产品 (系列)

KSM-FL 重型万向球系列

Machined Steel KSM-FL Series

可选材质(Available Materials):

BS/CS, PL/CS, SS/CS, SS/SS, PL/SS

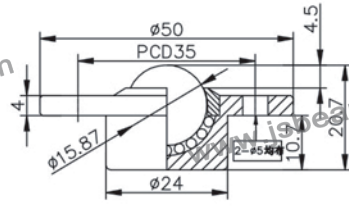


| 型号 Model No. | 编号 | 负载能力 Loading Capacity (kg) | | | 尺寸(mm) Dimensions | | | | | | 重量(kg) Weight |
|-----------------|------|----------------------------|---------------|------------|----------------------|----|-----|------|----|-----|------------------|
| | | 材质 Material | 建议 Suggest | 最大 Max. | d | D | h1 | H | h2 | M | |
| KSM-8FL | 1701 | BS/CS | 8 | 15 | 8 | 15 | 1.7 | 13.6 | 20 | M5 | 0.020 |
| | | SS/SS | 5 | 10 | | | | | | | 0.018 |
| | | PL/CS | 4 | 5 | | | | | | | |
| KSM-12FL | 1702 | BS/CS | 25 | 30 | 12 | 22 | 2.5 | 17 | 18 | M8 | 0.035 |
| | | SS/SS | 15 | 20 | | | | | | | 0.032 |
| | | PL/CS | 10 | 15 | | | | | | | |
| KSM-15FL | 1703 | BS/CS | 40 | 45 | 15.88 | 24 | 6.0 | 21 | 18 | M8 | 0.060 |
| | | SS/SS | 30 | 40 | | | | | | | 0.055 |
| | | PL/CS | 15 | 20 | | | | | | | |
| KSM-22FL | 1704 | BS/CS | 90 | 100 | 22.23 | 36 | 4.0 | 31 | 22 | M10 | 0.200 |
| | | SS/SS | 70 | 80 | | | | | | | 0.190 |
| | | PL/CS | 20 | 25 | | | | | | | |
| KSM-25FL | 1705 | BS/CS | 130 | 150 | 25.4 | 38 | 6.5 | 32 | 25 | M12 | 0.235 |
| | | SS/SS | 100 | 120 | | | | | | | 0.220 |
| | | PL/CS | 25 | 30 | | | | | | | |
| KSM-30FL | 1706 | BS/CS | 250 | 300 | 30.16 | 45 | 6.4 | 36.5 | 30 | M16 | 0.410 |
| | | SS/SS | 200 | 250 | | | | | | | 0.395 |
| | | PL/CS | 30 | 35 | | | | | | | |
| KSM-38FL | 1707 | BS/CS | 300 | 350 | 38.1 | 54 | 9.5 | 48 | 30 | M16 | 0.600 |
| | | SS/SS | 220 | 280 | | | | | | | 0.580 |
| | | PL/CS | 35 | 40 | | | | | | | |

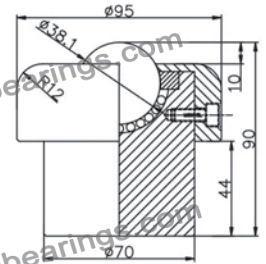
其他可以定制材料(Other Materials available):

主球(Main Ball): 塑料 POM、尼龙 Nylon; 壳体(Shell): 塑料 POM、尼龙 Nylon

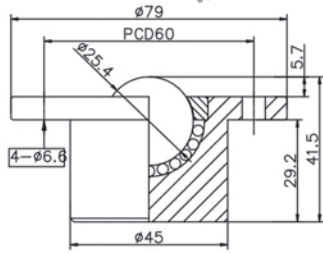
定制 特殊 非标 万向球 FB 系列 (可根据客户要求定制各种非标万向球)



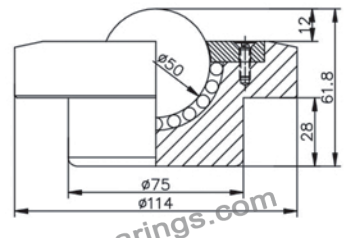
| 型号 | 编号 | 单体载重 | 容许荷重 | 本体重量 |
|---------|------|------|------|------|
| FB-001型 | 1501 | 5kg | 8kg | 60g |



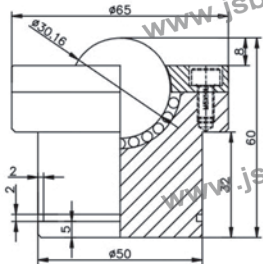
| 型号 | 编号 | 单体载重 | 容许荷重 | 本体重量 |
|---------|------|-------|-------|-------|
| FB-006型 | 1506 | 300kg | 350kg | 3.2kg |



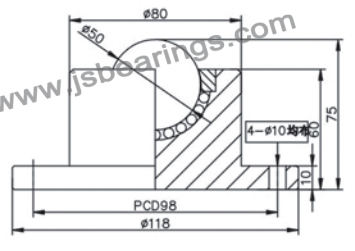
| 型号 | 编号 | 单体载重 | 容许荷重 | 本体重量 |
|---------|------|-------|-------|------|
| FB-002型 | 1502 | 100kg | 150kg | 720g |



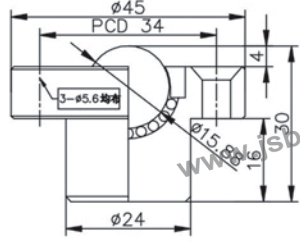
| 型号 | 编号 | 单体载重 | 容许荷重 | 本体重量 |
|---------|------|-------|-------|--------|
| FB-007型 | 1507 | 400kg | 500kg | 2.62kg |



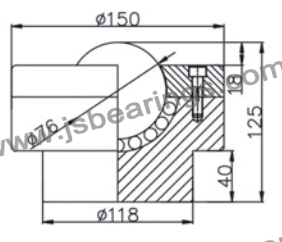
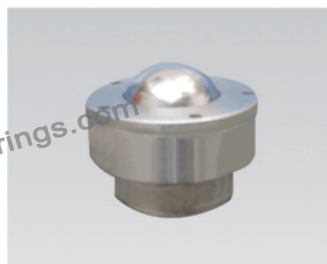
| 型号 | 编号 | 单体载重 | 容许荷重 | 本体重量 |
|---------|------|------|-------|-------|
| FB-003型 | 1503 | 80kg | 100kg | 1.2kg |



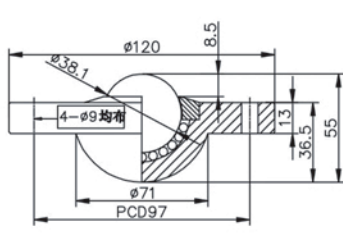
| 型号 | 编号 | 单体载重 | 容许荷重 | 本体重量 |
|---------|------|-------|-------|-------|
| FB-008型 | 1508 | 350kg | 450kg | 2.2kg |



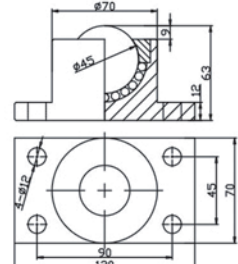
| 型号 | 编号 | 单体载重 | 容许荷重 | 本体重量 |
|---------|------|------|------|------|
| FB-004型 | 1504 | 35kg | 40kg | 150g |



| 型号 | 编号 | 单体载重 | 容许荷重 | 本体重量 |
|---------|------|--------|--------|-------|
| FB-009型 | 1509 | 1500kg | 2000kg | 6.5kg |

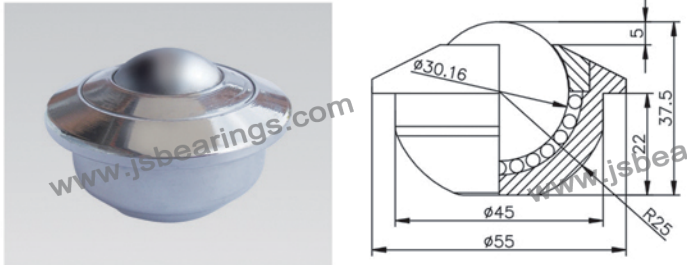


| 型号 | 编号 | 单体载重 | 容许荷重 | 本体重量 |
|---------|------|-------|-------|-------|
| FB-005型 | 1505 | 250kg | 300kg | 1.7kg |

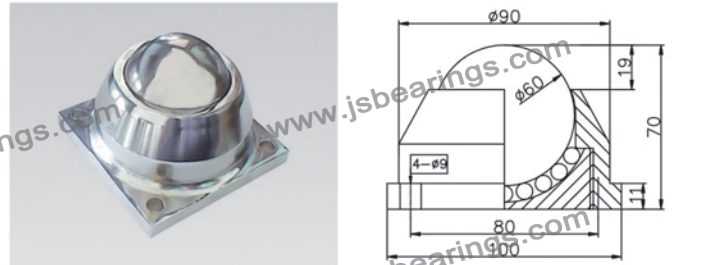


| 型号 | 编号 | 单体载重 | 容许荷重 | 本体重量 |
|---------|------|-------|-------|------|
| FB-010型 | 1510 | 300kg | 350kg | |

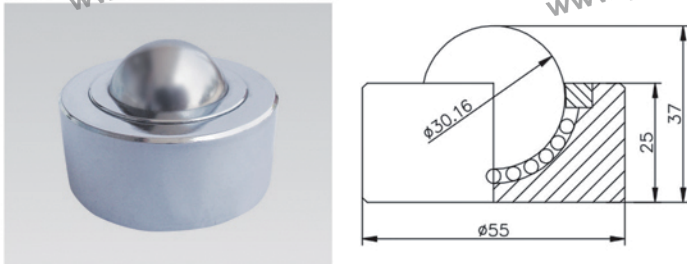
定制 特殊 非标 万向球 FB 系列 (可根据客户要求定制各种非标万向球)



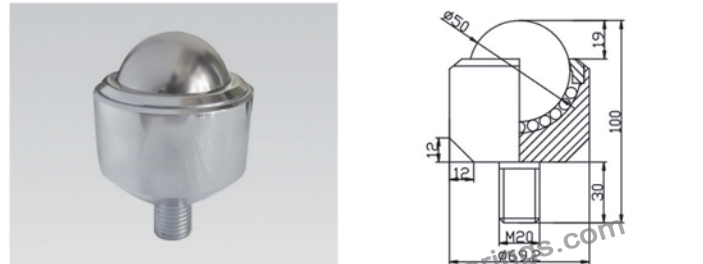
| 型号 | 编号 | 单载体重 | 容许荷重 | 本体重量 |
|---------|------|-------|-------|------|
| FB-021型 | 1521 | 250kg | 300kg | 320g |



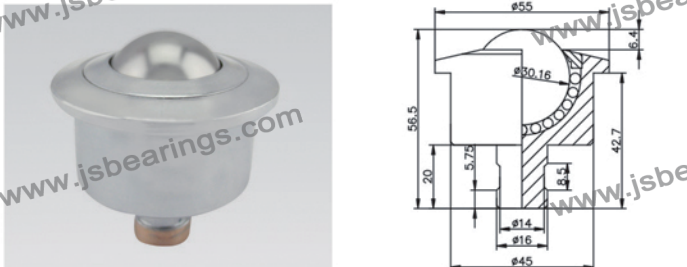
| 型号 | 编号 | 单载体重 | 容许荷重 | 本体重量 |
|---------|------|-------|-------|-------|
| FB-026型 | 1526 | 600kg | 800kg | 2.5kg |



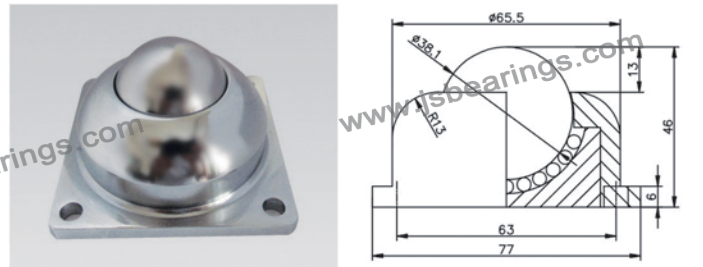
| 型号 | 编号 | 单载体重 | 容许荷重 | 本体重量 |
|---------|------|-------|-------|------|
| FB-022型 | 1522 | 250kg | 300kg | 450g |



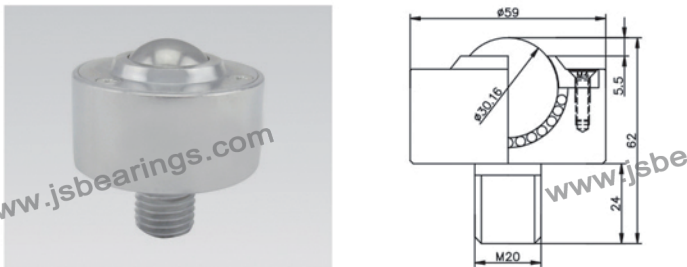
| 型号 | 编号 | 单载体重 | 容许荷重 | 本体重量 |
|---------|------|-------|-------|-------|
| FB-027型 | 1527 | 400kg | 500kg | 1.5kg |



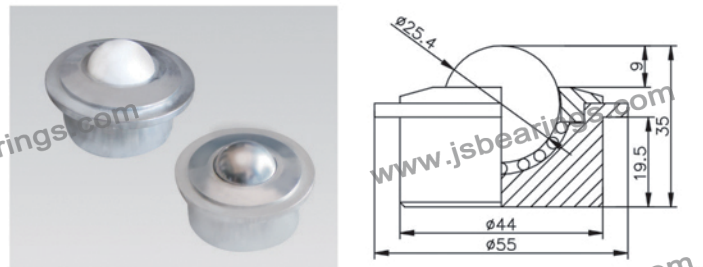
| 型号 | 编号 | 单载体重 | 容许荷重 | 本体重量 |
|---------|------|-------|-------|------|
| FB-023型 | 1523 | 200kg | 250kg | 600g |



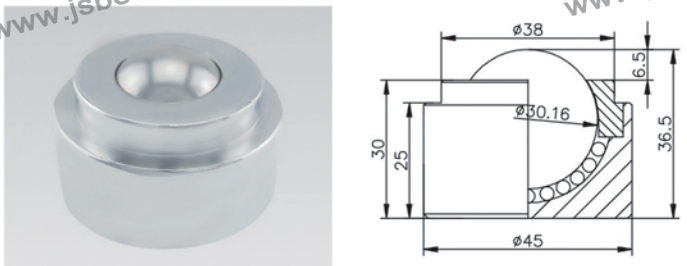
| 型号 | 编号 | 单载体重 | 容许荷重 | 本体重量 |
|---------|------|-------|-------|------|
| FB-028型 | 1528 | 400kg | 450kg | 890g |



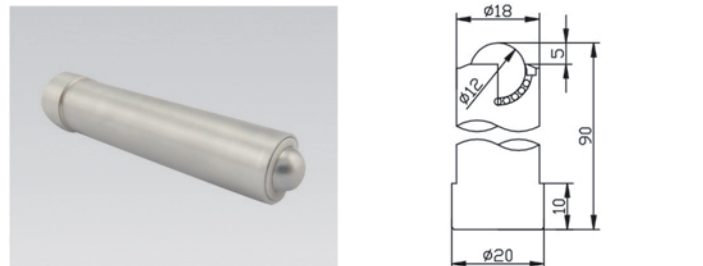
| 型号 | 编号 | 单载体重 | 容许荷重 | 本体重量 |
|---------|------|-------|-------|-------|
| FB-024型 | 1524 | 200kg | 250kg | 1.4kg |



| 型号 | 编号 | 单载体重 | 容许荷重 | 本体重量 |
|---------|------|------|------|------|
| 定制-029型 | 1529 | 20kg | 30kg | 330g |



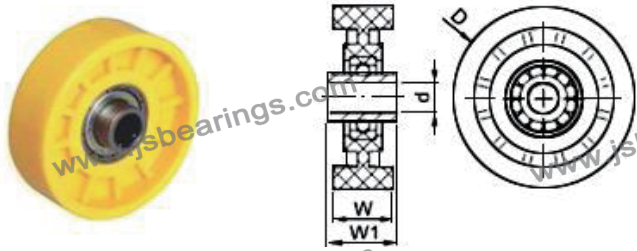
| 型号 | 编号 | 单载体重 | 容许荷重 | 本体重量 |
|---------|------|-------|-------|------|
| FB-025型 | 1525 | 250kg | 300kg | 430g |



| 型号 | 编号 | 单载体重 | 容许荷重 | 本体重量 |
|---------|------|------|------|------|
| 定制-030型 | 1530 | 10kg | 15kg | 110g |

福来轮

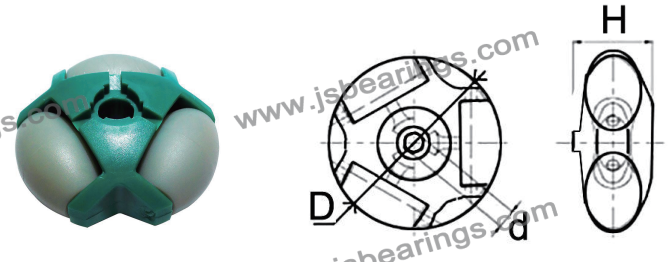
Conveyor Roller SWS Series



| 型号 Model | d | D | W | W1 |
|-------------|---|------|----|----|
| SWS-38 | 8 | 38 | 14 | 18 |
| SWS-50 | 8 | 48.5 | 15 | 18 |

全向轮

Conveyor Roller Omniwheel



| 型号 Model | d | D | Height | 滚子数 Rollers |
|-------------|--------|----|--------|----------------|
| SWT-48 | 8 R/H | 48 | 22 | 3 |
| SWT-82 | 12 R/H | 82 | 34 | 3 |

全向轮

Conveyor Roller Omniwheel



| 型号 Model | d | D | Height | 滚子数 Rollers |
|-------------|----------|----|--------|----------------|
| SWC-50 | 8 Round | 50 | 40 | 6 |
| SWC-60 | 10 Round | 60 | 40 | 6 |

| 型号 Model | d | D | Height | 滚子数 Rollers |
|-------------|----------|----|--------|----------------|
| SWC-70R | 15 Round | 70 | 46 | 8 |
| SWC-70H | 14 Hex | 70 | 46 | 8 |

冲压转盘轴承

Lazy Susan Bearing



| 型号 Model | d | h | L | S | T |
|-------------|----|------|-----|-----|----|
| LS-51 | 11 | 4 | 51 | 68 | 9 |
| LS-71 | 36 | 4 | 71 | 86 | 9 |
| LS-95 | 54 | 4 | 95 | 120 | 9 |
| LS-149 | 10 | 6x15 | 149 | 205 | 22 |

| 型号 Model | d | D | h | L | S | T |
|-------------|------|-------|---|----|-----|-----|
| LS-139 | 62.5 | 77.5 | 4 | 40 | 139 | 10 |
| LS-204 | 102 | 134.5 | 4 | 74 | 204 | 9 |
| LS-230 | 115 | 145 | 7 | 78 | 230 | 8.6 |



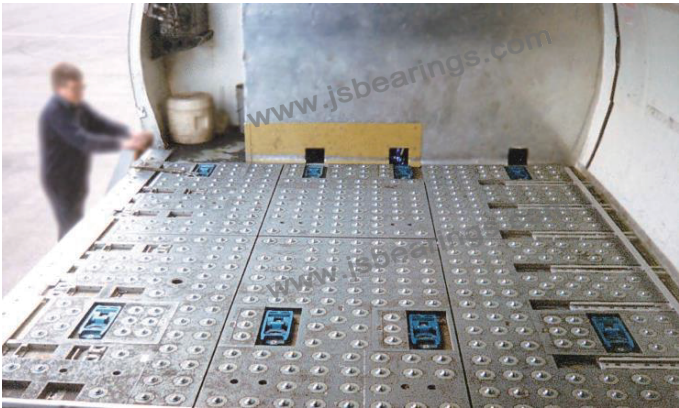
万向球应用案例 application cases



万向球用于空运货物转运中心
Used in air cargo transfer center



万向球用于车间装配生产线
Used in workshop assembly line



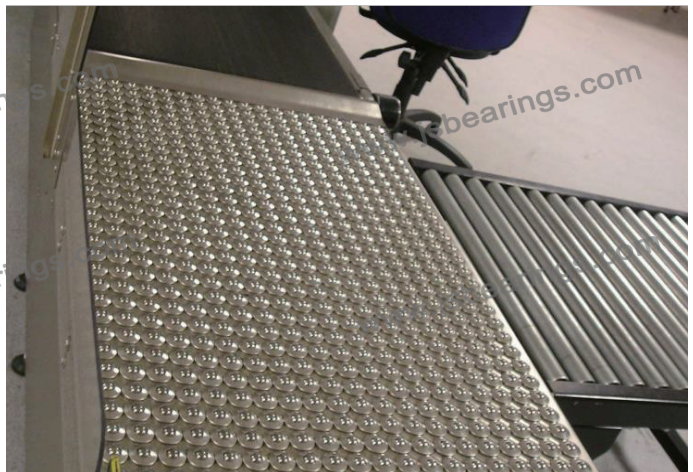
万向球用于货运飞机货舱
Used in cargo hold of cargo planes



万向球用于货物装卸平台
Used for cargo handling platforms



万向球用于物料周转台
Used for material turnover table



万向球用于行李包裹安检设备
Used for baggage screening equipment



Jintai
Ball Transfer System
锦泰万向球产品（系列）

Hunan Jintai Hardware and Machinery Co.,Ltd

Adress:No.503,Hunan International Commerce Center,
Jintai Square,Changsha 410001,Hunan.

Mob:+86 13974953910

Tel:+86 731 84770165

Fax:+86 731 84770163

Email:sales@slide-bearing.com

bearing.jim.luo@gmail.com

Website:www.jsbearings.com

www.slide-bearing.com